



## ESPE has reached its first half-century!

THE ESPE 50TH MEETING TOOK PLACE in Glasgow on 25–28 September 2011. To mark this important milestone in the history of our Society, the scientific theme ‘Evidence-based Paediatric Endocrinology – its Strengths and Limitations’ gave delegates the opportunity to look back at what we know, critically appraise the basis of that knowledge (with an emphasis on pathophysiology and the evidence behind clinical practice), showcase current research and look to the future as ESPE becomes an increasingly international forum for the exchange of high quality basic scientific and clinical information.



To commemorate this milestone in ESPE’s history, the new ESPE logo was unveiled and members were presented with the newly designed tie or scarf and a copy of the new ESPE history book ‘ESPE – The First 50 Years’ edited by Wolfgang Sippell, which tells the story of ESPE’s development from a small club of friends into an international scientific society. I am delighted that four founding ESPE members were able to be with us in Glasgow: Ruth Illig, Zvi Laron, Ralph Rappaport and Henk Visser. A symposium on ‘Evidence-based Medicine in Growth Assessment’ was held in memory of Professor James Tanner, another founder member, who died in August 2010 – understanding how children grow is still fundamental to the practice of paediatrics and paediatric endocrinology.

It was encouraging that 1063 abstracts were submitted from 66 countries and 3200 delegates attended from 89 countries worldwide – a record! As well as Plenary Lectures and themed Symposia relating to evidence-based medicine, there was a diverse range of topics covered in Plenary Lectures, Symposia, Meet-the-Expert, New Perspectives and Yearbook sessions. I am grateful to Jean-Claude Carel and my other colleagues on the POC for their support in developing scientific sessions of the highest quality.

The Scottish Exhibition and Conference Centre (SECC) was an outstanding venue for the scientific sessions and I am pleased that we were able to re-introduce guided poster tours during the lunch ‘breaks’. We tried hard to make the meeting as ‘green’ as possible (with recycling of unused conference bags, the lunch bags etc) and I was delighted when, after the end of the meeting, the SECC presented me with a certificate stating that, on behalf of the SECC, ‘an acre of land will be reforested for the 50th Annual Meeting of the European Society for Paediatric Endocrinology, ESPE 2011’ as part of Trees for Life’s work to restore the Caledonian Forest in the Highlands of Scotland.

Despite the size to which ESPE has now grown, it still inspires feelings of being a part of a family rather than of an impersonal organisation and such sentiments were very much to the fore in Glasgow – the important social aspects of ESPE meetings were not neglected. For the Welcome Reception at the Glasgow Science Centre, delegates were ‘piped’ across the

### ESPE News Contents *(click on a link below)*

- [ESPE Annual Business Meeting](#)
- [Messages from Secretary General](#)
- [ESPE 2011 Prizewinners](#)
- [Novel Genetic Form of Childhood Hypoglycaemia Identified](#)
- [ESPE Summer School 2011](#)
- [New Accreditation & Syllabus Subcommittee](#)
- [ESPE Clinical Fellowship Programme](#)
- [ESPE Research Fellowship Programme](#)
- [Research Fellowship Grant Recipients](#)
- [ESPE Sabbatical Leave Programme](#)
- [6th Advanced Seminar in Developmental Endocrinology](#)
- [Future Meetings](#)

## Welcome to issue 17

IN THIS ISSUE, we present for the first time the new ESPE logo and the new design. We hope you like the changed face of the newsletter. This issue also contains notes and photographs from the 50th ESPE meeting held in Glasgow, Scotland, this past September. This was a special meeting, since it coincided with the 50th anniversary of ESPE, a real occasion for celebration. This ESPE meeting was also the largest so far with respect to the number of participants and it also was great in its scientific content and social activities. We thank Chris Kelnar, the President of ESPE 2011 and the Programme Organising Committee for this wonderful meeting. Professor Chris Kelnar also had the wonderful idea of including a benefit concert in the ESPE 2011 programme, aiming to raise money for children affected by the earthquake and tsunami in Japan. The concert was extraordinary and well appreciated by everybody in the audience.

Another important item in this issue is a farewell note from Franco Chiarelli who, as we all know, served as the Secretary General of ESPE for two terms and a welcome note from Lars Sävendahl who has recently taken over this position. We thank Franco Chiarelli for enlarging the Society and for his efforts to make ESPE ‘the’ paediatric endocrine society of the world. We wish the new Secretary General every success.

# News from the ESPE Annual Business Meeting 2011

THE ANNUAL BUSINESS MEETING WAS HELD on Monday 26 September between 1600 and 1730 in the Scottish Exhibition and Conference Centre, Glasgow.

After approval of the minutes of the previous Annual Business Meeting in 2010, the Secretary's Annual Report for 2011 was presented. Reports on several ESPE activities were presented that we will include and update our members in the forthcoming newsletters throughout the year, as the editorial board of the newsletter.

Olle Söder's position as the Chair of the Strategic and Finance Committee ended in 2011 after a successful term of 6 years and the only candidate for his replacement was Anita Hokken-Koelega from the Netherlands. She was elected with a great majority of the votes from the ESPE members. We congratulate Anita and wish her the best.

Sixty-seven ordinary members were accepted for membership at the Annual Business Meeting. We congratulate all the new members and welcome them to our Society.

Balloting for Presidency and Venue for the 2016 Annual Meeting took place between Gothenburg, Athens and Paris, and Paris was the champion of the cities with Jean-Claude Carel the President of the 2016 meeting. We congratulate Jean-Claude Carel.

There were wonderful presentations for the 51st Annual ESPE Meeting, 20–23 September 2012, Leipzig, Germany by Wieland Kiess and for the 9th Joint Meeting on Paediatric Endocrinology, 19–22

September 2013, Milan, Italy by Franco Chiarelli. The scientific programme for the Leipzig meeting is already mostly prepared and will follow the scientific outlay of the Glasgow meeting. We are sure that the meeting in Leipzig will be highly appreciated by the ESPE members.

Paul Czernichow, the Editor-in-Chief, reported that the Impact Factor of Hormone Research in Paediatrics has increased to 2.044 and thanked all the members for their contributions.

Changes to the ESPE membership application process and the ESPE membership fees were approved by the members and will be presented to our members on the ESPE website and also in the email alerts sent to all members every month.

The most emotional part of the meeting was the farewell talk of Franco Chiarelli, the former Secretary General of the ESPE and his handover to Lars Sävendahl, the new Secretary General elected in 2010. Franco Chiarelli was given a standing ovation and over a minute's applause from all members present, reflecting the fantastic job that he has done during his seven years as Secretary General.

As the Editorial Board, we also thank Franco Chiarelli for his initiative and support for the newsletter. We also wish the best to Lars Sävendahl as the new Secretary General of ESPE.

**Professor Feyza Darendeliler, Editor, ESPE Newsletter**

## Farewell from Franco

DEAR FRIENDS AND COLLEAGUES, welcome to the 17th issue of the ESPE newsletter, with which I take the opportunity to thank you for all your help and support throughout my term as ESPE Secretary General. It has been an honour and a pleasure for me to serve our society over the past seven years, during which ESPE has continued to grow, with the number of members and delegates attending our annual meetings increasing annually. Our recent meeting in Glasgow was a great success and attracted record members from outside of Europe, confirming ESPE's international importance in the field of paediatric endocrinology.

I would also like to take this opportunity to encourage you to actively participate in ESPE by applying for upcoming vacancies in Council. I myself found serving as the Secretary General to be an extremely exciting and rewarding experience. I will enjoy continuing to take an active role in ESPE as our society goes from strength to strength under the guidance of our new Secretary General, Professor Lars Sävendahl, whom I wish all the best in his role.

With sincere thanks and best wishes,  
**Professor Franco Chiarelli,**  
*Outgoing Secretary General*

## News from the Secretary General

DEAR ESPE MEMBERS, FRIENDS AND COLLEAGUES, I am deeply grateful to now have the privilege of serving ESPE as its new Secretary General. Many thanks to Professor Franco Chiarelli who served ESPE as Secretary General for 7 years. At the Annual Business Meeting in Glasgow, ESPE members recognised Professor Chiarelli with a standing ovation. Personally, I would like to thank Professor Chiarelli for his commitment to make the transition of all duties as smooth as possible. Thanks Franco!

My first ambition will be to focus on the ESPE membership. I will approach all members and ESPE Committees to get their input regarding the future direction of our Society. Based on this a strategic plan will be formulated. I will keep you updated.

### New ESPE members

I would like to give the 67 new ESPE members approved at the Annual Business Meeting in Glasgow a very warm welcome to the Society. The new members are from 33 different countries, and 30 of them are from outside Europe. It is now obvious that ESPE has become a truly international society.

### Council elections

I would like to congratulate Professor Anita Hokken-Koelega, who was elected as the new ESPE Treasurer. Professor Hokken-Koelega knows ESPE well after having previously served on ESPE Council. She has proven administrative skills being the director of the Dutch Growth Research Foundation. Many thanks to Professor Olle Söder, who has now completed a 6-year term as ESPE Treasurer. During these years, Professor Söder has taken many important actions preparing ESPE for the future.

### ESPE 2016

During the Annual Business Meeting in Glasgow the location and presidency for the ESPE Annual Meeting in 2016 were decided. Applications had been received from Athens, Gothenburg, and Paris. In a secret ballot, Paris was successfully elected as the venue, with Professor Jean-Claude Carel as President in 2016. Congratulations to Professor Carel!

For more information on all of our activities, please visit the ESPE website at [www.eurospe.org](http://www.eurospe.org) or contact me via the ESPE Secretariat at [espe@eurospe.org](mailto:espe@eurospe.org).

Best wishes,  
**Professor Lars Sävendahl, ESPE Secretary General**

# ESPE 2011 Prizewinners

The following prizes were awarded at ESPE 2011 in Glasgow. Congratulations to all of the winners!



FRANCO CHIARELLI  
WITH CHARLES SULTAN

## Andrea Prader Prize

**Professor Charles Sultan** (Montpellier, France)



FRANCO CHIARELLI  
WITH ISIS GHALI

## Outstanding Clinician Award

**Professor Isis Ghali** (Cairo, Egypt)



LARS SÄVENDAHL WITH  
ANITA HOKKEN-KOELEGA

## Research Award

**Professor Anita Hokken-Koelega**  
(Rotterdam, The Netherlands)



NILS KRONE

HELEN STORR

## Young Investigator Award

**Dr Nils Krone** (Birmingham, UK) and  
**Dr Helen Storr** (London, UK)

## ESPE President Poster Awards

**Beverly Hird and colleagues** (Manchester, UK)

*Do undiagnosed cases of salt wasting congenital adrenal hyperplasia (CAH) contribute to infant mortality in the absence of newborn screening?*  
P1-d1-166

**Artur Bossowski and colleagues**

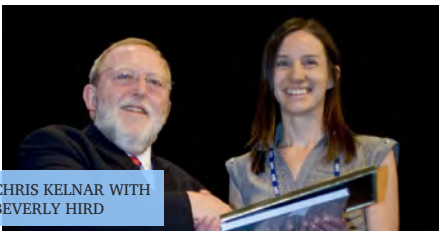
(Białystok, Poland)

*Relationship between T regulatory cells with phenotype CD4+ CD25 high and anti-thyroid autoantibodies in children with Graves' disease and Hashimoto's thyroiditis.* P1-d3-187

**Emma Burgos Ramos and colleagues**

(Madrid, Spain and Athens, OH, USA)

*Central regulation of serum proteomes by leptin and insulin.* P1-d1-240



CHRIS KELNAR WITH  
BEVERLY HIRD

**Yonatan Crispel and colleagues**

(Kriat Tivon, Israel)

*Empirical testing of the Infancy Childhood Transition (ICT): theory of adaptive life history*  
P1-d1-309

**Ulla Sankilampi and colleagues** (Kuopio,

Finland; Turku, Finland and London, UK)

*Osteocalcin is a determinant of the postnatal testosterone surge in infant boys.* P1-d1-332

## Hormone Research in Paediatrics Prize

ORIGINAL PAPER

**Su-Jin Lee** for 'Estrogen prevents senescence through induction of WRN, Werner syndrome protein'

*Lee et al. 2010 Hormone Research in Paediatrics 74 33-40*

NOVEL INSIGHTS FROM CLINICAL PRACTICE

**Anitha Kumaran** for 'Congenital hyperinsulinism due to a compound heterozygous ABCC8 Mutation with spontaneous resolution at eight weeks'

*Kumaran et al. 2010 Hormone Research in Paediatrics 73 287-292*

## Editorial *continued from page 1*

This issue also includes important news from the Accreditation and Syllabus Subcommittee, which has been redesigned under the umbrella of the Education and Training Committee of ESPE. The short term aim of the subcommittee is to update the paediatric endocrine training syllabus and at long term to make plans for accreditation procedures in countries included in ESPE.

Last but not least, we thank Professor Jesús Argente who has been the editor of the newsletter for several years and the editorial board for their hard work in establishing the newsletter in sustaining its quality. We, as the new editorial board, will do our best to continue the quality of the newsletter and try to enrich it with feedback from all members. Please send us your comments, including items that you want to see included or improved in the newsletter.

Yours sincerely,

**Professor Feyza Darendeliler**  
*Editor, ESPE Newsletter*

EDITORIAL BOARD

Indi Banerjee, Gabriele Martos-Moreno

## Henning Andersen Prize for best abstract

BASIC SCIENCE

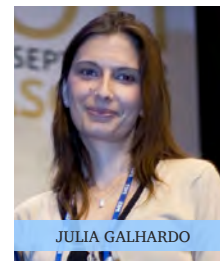
**Dr Claire Hughes** (London, UK)

*Mutations in GPX1 and NNT, encoding antioxidant defence genes, cause familial glucocorticoid deficiency (FGD)* FC2-87

CLINICAL SCIENCE

**Dr Julia Galhardo** (Bristol, UK)

*Serum levels of pigment epithelium-derived factor (PEDF) are positively associated with acanthosis nigricans in obese adolescents* FC1-81



JULIA GALHARDO



CLAIRE HUGHES

Abstracts from ESPE 2011 were published in *Hormone Research in Paediatrics* 2011 76 (Supplement 2).

## ESPE has reached its first half-century! *continued from page 1*

River Clyde and a piper welcomed those invited to the concurrent President's Dinner in the Art Nouveau Charles Rennie Mackintosh 'House for an Art Lover'. Unfortunately these events coincided with the only few wet hours of the whole meeting – to the surprise of some the weather was generally excellent!

The ESPE evening celebrated ESPE's anniversary in style: the 50th Meeting Celebratory Concert, given by the renowned Chamber Orchestra of Europe, was outstanding and was followed by a performance by a School Pipe Band and Scottish Dancers doing the 'Highland Fling'. At my request, the Concert was designated as a benefit concert for the children of Japan following the recent natural disasters and we raised £7100 (approximately €8200) to donate to UNICEF as a result. I am very grateful to everyone who gave so generously.

The evening was rounded off with a dinner (which included the ceremonial piping in and 'address' to the haggis and an ESPE 50th birthday cake, complete with fireworks) and Scottish ceilidh and rock dancing which finished at midnight with 'Auld Lang Syne', the traditional Scots farewell. I would particularly like to thank Malcolm Donaldson and my other colleagues on the LOC for their great commitment and support 'at the Glasgow end' and, especially, Malcolm for his graciousness in allowing me to be the ESPE President in 'his' city given that I live and work in Edinburgh.

ESPE goes from strength to strength and I am very much looking forward to the meeting in Leipzig next year under the Presidency of Wieland Kiess. Here's to the next 50 years!

**Professor Chris Kelnar**, *President, ESPE 2011*

# ESPE Summer School 2011

THE 25TH ESPE SUMMER SCHOOL took place at Blairquhan Castle, Ayrshire, Scotland, 22–24 September 2011, prior to the 50th Annual ESPE Meeting in Glasgow. Since 1987, the ESPE Summer School has brought together paediatric endocrinologists in training and academic clinicians and scientists. This year's focus was growth, thyroid, disorders of sex development and type 1 diabetes mellitus.

The interactive sessions used a voting system that was introduced last year and were a resounding success again. There were opportunities for active discussion between students and faculty, and the presentation of cases, one from each student, allowed the sharing of ideas and discussion of difficult cases.



LOCAL ORGANISER, ESPE 2011  
PRESIDENT AND SUMMER  
SCHOOL COORDINATOR

Another important aim of the Summer School is to encourage networking between students around the world. The 26 fellows who were selected on their merits represented 17 countries from 4 continents. The faculty and the Summer School Organising Committee did a great job and their contributions are much appreciated. Thanks are especially due to Dr Scott Williamson, the Local Organiser. ESPE is grateful for the support of Ferring Pharmaceuticals A/S.



After four years on the Summer School Steering Committee, Professors Juliane Leger and Moshe Philip came to the end of their term and were replaced by Professor Abdullah Bereket and Dr Nick Shaw. The 26th Summer School will be held at Schloss Oppurg, 17–19 September 2012, before the 51st Annual ESPE Meeting in Leipzig. Application forms and further information can be found on the ESPE website. The application deadline is 1 February 2012. Please encourage your fellows to apply!

**Professor Faisal Ahmed**, Chair, Summer School Steering Committee

## ETC SUBCOMMITTEE

# New Accreditation and Syllabus Subcommittee

DEAR COLLEAGUES, AN ACCREDITATION and syllabus subcommittee has been formed under the umbrella of the Education and Training Committee (ETC) with the aim of continuing and revitalising the paediatric endocrinology training studies which were started back in 1995, with Peter Hindmarsh as the chair.

The first aim of this group is to update the paediatric endocrinology training syllabus which was last updated in 2001 (as per the website). An update of the syllabus should revise, restructure, and amend the current guidelines in light of present practice and new developments, should evaluate the feasibility of the current tutorial system approach in view of national differences in paediatric training, and should also focus on minimum but obligatory requirements.

We would like to ask you:

1. whether you are using the ESPE paediatric endocrinology training syllabus in your country;
2. whether you have a different syllabus at a national level;
3. whether you have a separate training programme for general paediatricians with a particular interest in paediatric endocrinology and
4. whether you have a separate syllabus for diabetes?

We would appreciate your collaboration.

Please respond by 31 January 2012 to: [feyzad@istanbul.edu.tr](mailto:feyzad@istanbul.edu.tr)

Regards,

**Professor Feyza Darendeliler**,

*Chair, Accreditation and Syllabus Subcommittee*

**Professor Jan Lebl**,

*Chair, Education and Training Committee*

## Deadlines

Please note these fast approaching deadline dates and submit your applications as soon as possible.

### Awards, grants and fellowships – deadline dates for application

ESPE Science School 2012 application deadline	10 Jan 2012
NICHe conference application deadline	10 Jan 2012
ESPE Young Investigator Award	15 Jan 2012
ESPE Outstanding Clinician Award	15 Jan 2012
Visiting Scholarship application deadline	31 Jan 2012
6th ESPE Advanced Seminar in Developmental Endocrinology applications	31 Jan 2012
ESPE Summer School 2012 applications	1 Feb 2012
ESPE Research Fellowship	1 Mar 2012
ESPE Research Unit preliminary applications	4 Mar 2012
ESPE 2012 Travel Grant applications	7 Mar 2012
ESPE 2012 abstract deadline	7 Mar 2012
Deadline for applications for ESPE Council vacancies	8 Mar 2012
ESPE Visiting Scholarship	30 Apr 2012
ESPE 2012 early registration deadline	2 May 2012
Sabbatical Leave Programme	No deadline

See the ESPE website [www.eurospe.org](http://www.eurospe.org) for further details and application forms

# ESPE Clinical Fellowship Programme

THE ESPE CLINICAL FELLOWSHIP PROGRAMME aims to promote clinical management expertise and clinical research through a training programme in a European clinical centre of excellence, and thus help to develop, achieve and maintain the highest standards of paediatric endocrine clinical care worldwide.

Clinical Fellowship Awards support the training of paediatricians in paediatric endocrinology for whom the possibilities for such training are insufficient and introduces them to clinical research. The training period is between 3 and 12 months and is provided by European centres with a high reputation in clinical paediatric endocrinology. The clear expectation is that, on completing their Fellowship, Fellows return to develop paediatric endocrinology clinical care in their home countries and institutions.

Since its inception (with the award of one Fellowship in 1993), the Programme has been generously supported by Merck Serono. For the last three years, matching support has been provided by ESPE itself and, as confirmation of the importance that ESPE attaches to promoting the development of patient care in paediatric endocrinology worldwide, the value of this ESPE support was further increased from 2009/10.

As ESPE increasingly develops into a global organisation, Fellowships have been awarded in recent years not only to trainees from Eastern (predominantly) and Western Europe, but also Africa, India, Pakistan, the Middle East, China and South America. In 2009/10 and 2010/11, Fellowships were awarded to applicants from China, Russia, Ukraine, Finland, Italy, Spain, Switzerland, Romania, Greece, Macedonia, Bulgaria, Uzbekistan, Jordan, Morocco, Algeria, Tunisia, Libya, Brazil, Kenya, Nigeria, India and Pakistan. At the 50th ESPE Annual Scientific Meeting in Glasgow this year, 15 awards were made to applicants from Sudan, Nigeria, Russia, Venezuela, Abu Dhabi, Georgia, Egypt, Cameroon, India and Brazil – ESPE is now the global society for paediatric endocrinology.

Professors Chris Kelnar and Professor Jan Lebl (Secretary) have now stood down as, respectively, Chair and Secretary of the Clinical Fellowship Committee after many years of service and replaced by Dr Rasa Verkauskiene (Lithuania) and Dr Violeta Iotova (Bulgaria) – both former Fellows themselves. Ten applications were received for

membership and this interest in the Committee's activities is very encouraging. The newly elected Committee members are Dr Marek Niedziela (Poland) – another former Fellow, and Dr Khalid Hussain (UK).

Last year, Dr Iotova (on behalf of the Committee) sent out a questionnaire to former Fellows in order to assess the efficacy and impact of the Clinical Fellowship programme 15 years after its start. There has been a 67% return rate and, amongst the findings, it is clear that the overwhelming majority have found their Clinical Fellowship valuable or extremely valuable for their career and the many are now consultants, lecturers or professors in their home institutions or countries. All have attended subsequent ESPE meetings (one third with presentations), 90% are actively involved in research and 90% have maintained clinical/research contact with their host centre.

It has been the intention of the Committee to promote more formal post-Fellowship scientific meetings in selected participants' home countries. After the success of the first such workshop in Poland, a second meeting took place in Kaunas, Lithuania, ably organised by Dr Rasa Verkauskiene, in June 2011. The faculty consisted of Professor Paul Czernichow, Professor Jan Lebl, Dr Rasa Verkauskiene and Professor Chris Kelnar. Many former ESPE clinical fellows attended from Belarus, Estonia, Latvia, Lithuania, Poland and Russia. Future meetings are planned in strategic venues to attract past Fellows from other countries, initially in the Middle East and Bulgaria.

Although the Clinical Fellowship Programme continues to be very successful, some practical difficulties are increasing: there are very high costs associated with staying in some host centres, Fellows are drawn from increasingly diverse geographical and cultural backgrounds and with sometimes very different experiences and needs, and there are worsening visa restrictions for non-EU applicants with a general tightening of border controls (not least in the UK). These and other issues will continue to provide challenges in the years ahead.

I am most grateful to those clinicians and centres who host Fellows (in some cases on a recurring basis). The Committee is always pleased to hear from further centres who would be willing and able to host Fellows, and to provide further information to potential hosts and applicants for Clinical Fellowships from anywhere in the world. The deadline for applications is 31 May each year and awards will continue to be made at the Annual ESPE Scientific Meeting the following September. Details about the Programme and how to apply are on the ESPE web site ([www.eurospe.org/awards/awards\\_clinicalfellow.html](http://www.eurospe.org/awards/awards_clinicalfellow.html)).

If I may end with a personal note: I have always felt that activities such as the Clinical Fellowship Programme go to the heart and soul of what an organisation like ESPE should be about and I would like to thank my colleagues on the Committee for their invaluable support. I am proud to have hosted many Fellows myself and that, under my Chairmanship, ESPE has facilitated educational opportunities for trainee paediatric endocrinologists, initially from Eastern Europe but now including all parts of Europe, Africa, the Middle East, South America, India and China, as ESPE itself has developed to become the premier paediatric endocrine society worldwide. I know that the future of the Clinical Fellowship Programme is in safe hands.

**Professor Chris Kelnar**, *Outgoing Chair, ESPE Clinical Fellowship Committee*

## Recipients of the 2011 Research Fellowship grants

### Long term grants

**Dr Nuria Camats Tarruella** (Pediatric Endocrinology Research Unit, Hospital Vall d'Hebron, Barcelona)

RESEARCH PROJECT: *Studying novel mutations in the NR5A1 (SF-1) gene to gain further insight into sexual development.*

HOST SUPERVISOR: Prof Christa Flück, Department of Pediatrics, University Hospital Inselspital, Bern, Switzerland

**Dr Cosimo Giannini** (Univeristy of Chieti, Italy)

RESEARCH PROJECT: *Pathophysiology of type 2 diabetes in youth: the role of genetic variant in predisposing to type 2 diabetes mellitus*

HOST SUPERVISOR: Prof Sonja Caprio, Yale University School of Medicine, USA

### Short term grant

**Dr Maria Fritsch** (Medical University of Vienna, Austria)

RESEARCH PROJECT: *Non-invasive measurement of energy metabolism in patients with primary and secondary mitochondrial disorders*

HOST SUPERVISOR: Prof Dr Michael Roden, German Diabetes Centre, Duesseldorf, Germany

Details of the 2011 Research Fellowship programme can be found on page 7



# ESPE Sabbatical Leave Programme

ONE OF THE MARVELLOUS, but still underutilized, opportunities that ESPE offers is the Sabbatical Leave Programme, sponsored by Eli Lilly. The aim of this programme (established in 1993) is to enable ESPE members to undertake a 'sabbatical' to perform research in another institution. This provides a unique opportunity for scientific renewal, new research development and establishment of collaborative links. We believe that such sabbaticals can substantially contribute to the scientific career, and thereby improve the quality of paediatric endocrine research, education and patient care in Europe.

The ESPE Sabbatical Leave Committee will grant two to three positions per year (up to €25 000 per recipient). The sabbatical leave will typically extend over a period of between three and twelve months. The grant is a contribution towards the cost of travel, housing, academic and other items related to the sabbatical leave. Consideration will also be given to support requests for contributory payments to other persons covering clinical, teaching and other duties during the leave of absence.

## Who can apply?

The candidate must be an ESPE member with an active research commitment in paediatric endocrinology, aged > 40 years. So, contrary to associations between the word 'sabbatical' and 'established' professors, this program is primarily targeted at paediatric endocrinologists who are in the midst of their scientific career, and wish to make a substantial step forward. Applications can be sent to the chair of the Sabbatical Leave Committee (presently Professor Jan-Maarten Wit; email: [j.m.wit@lumc.nl](mailto:j.m.wit@lumc.nl)).

## What are the requirements of the host institution?

The sabbatical leave should be spent in a place other than the applicant's own institution. The host institution should be of known excellence in the field of research selected by the candidate. It should deliver a statement indicating acceptance of the candidate, and that appropriate facilities will be made available to undertake the research. It is expected that collaborative work will continue after the sabbatical leave is completed.

## Any other demands after the sabbatical?

The only demand is a short report to be submitted to the Sabbatical Leave Committee within three months of completing the Programme. Not a demand, but rather an opportunity, is that recipients shall be invited to present the scientific results in a minireview in *Hormone Research in Paediatrics*.

## How to apply

Detailed information on the deadline and procedures can be found on the [ESPE website](#).

## Finally...

A period in another institution can be enormously stimulatory for your scientific development, and may have a big impact on the rest of your working life! Use the opportunity!

*On behalf of the committee,*  
**Professor Jan-Maarten Wit, Chair,**  
*Sabbatical Leave Committee*

## Interviews with Jorma Toppari and Serap Turan

### 1. Why did you decide to apply for the ESPE Sabbatical Leave Programme?

**JT:** This had been incubating in my mind for a long time and when a good moment in my own department and family occurred, I decided to apply.

**ST:** As a clinician I had been performing clinical studies. However, I realized that since many diseases in paediatric endocrinology involve the application of genetics, it would be helpful to learn new techniques in molecular biology. The combination of basic science and clinical research would undoubtedly improve the quality of care that we provide to children with endocrine disorders. The Sabbatical Leave Programme provided me with the perfect opportunity to realise my ambitions. Therefore, I prepared a project proposal in conjunction with my hosts, Murat Bastepe and Henry Kronenberg, and applied to the ESPE Sabbatical Leave programme. I was fortunate to obtain funding and be selected to the programme.

### 2. How was your stay in the host centre, both from an academic perspective and otherwise?

**JT:** My stay in Copenhagen gave me the opportunity to focus on writing up our joint publications and to plan new studies. I had a long-standing collaboration with the host centre already before the sabbatical year, and this helped to strengthen cooperation. The host

centre organised excellent housing and work facilities for me. I was treated like a bishop in a vicarage, as the Finnish idiom goes.

**ST:** My host centre was the Endocrine Department, a Bone Research unit at the Massachusetts General Hospital, Harvard Medical Faculty. Here, both basic science research and clinical research was being performed by various groups. Working alongside these groups was very stimulating and rewarding. As a paediatrician, the adult endocrine experience was insightful. I gained valuable research experience in working with mouse models that improved the understanding of bone metabolic disease. I found the regular discussions and research meetings fruitful and pertinent to my clinical practice in paediatric endocrinology. I found Boston to be an exceptional place full of famous universities such as Harvard University and the Massachusetts Institute of Technology. There were plenty of museums, theatres and concert halls to explore and enjoy. There was certainly no dearth of entertainment or social activity, all very welcome after a hard day of scientific activity.

### 3. How will your work in your host centre have an effect on your academic career in your home country?

**JT:** The work facilitates our joint research projects. My own academic career is not so important, what is important is the progress in our search for reasons of current endocrine health problems.

## Interviews with Jorma Toppari and Serap Turan continued from page 6

**ST:** My plan is continue my basic scientific research in association with clinical activity in my home centre. I have just returned to my country and I'm planning to apply for research funding from different sources to continue the laboratory work for my research.

**4. Would you recommend the programme to other ESPE members? What would be the ideal time in one's academic life to apply to this programme?**

**JT:** I would warmly recommend the programme to ESPE members. It gives a time-out from routines for research. The ideal time is very individual, but I think that it would be good to build collaboration already before the sabbatical year to gain more from the time spent in the new centre.

**ST:** Absolutely, I recommend this programme to other ESPE members. A break for one year is a good chance to evaluate yourself in relation to others in the field and plan future opportunities for development. I had been privileged to work with colleagues at our institute who had been very supportive of my clinical work in my absence. I'm grateful to Professors Abdullah Bereket, Zeynep Atay, Tulay Guran and Belma Haliloglu and to colleagues at the Marmara University. I'm of course indebted to many people at the host centre at the Massachusetts General Hospital not only for the many opportunities in laboratory work, but also for their warm and welcoming attitudes. Finally, I wish to thank ESPE and the Sabbatical Leave Committee for providing me with this invaluable experience.

## Novel genetic form of childhood hypoglycaemia identified

RESEARCH AT THE UNIVERSITY of Cambridge and the Sanger Institute in the UK has identified an activating mutation in the insulin signalling molecule AKT2 as the cause of a syndrome of severe hypoglycaemia with suppressed ketones, normal free fatty acids,

and undetectable insulin (Hussain *et al.* 2011 *Science* 374 474). The 3 patients studied also had some degree of left-sided hemihypertrophy. This finding immediately suggests novel therapies that are currently being investigated. It is believed that this

disorder is underdiagnosed, and the investigators welcome referral of potential new cases to establish the spectrum of disease and design optimal treatment strategies. Contact Dr Robert Semple ([rks16@cam.ac.uk](mailto:rks16@cam.ac.uk)) or Dr Khalid Hussain ([k.hussain@ich.ucl.ac.uk](mailto:k.hussain@ich.ucl.ac.uk)).

## ESPE Research Fellowship Programme

*Please note the deadline for submission of potential Research Fellowship Awards: 1 March 2012.*

RESEARCH FELLOWSHIPS ARE AWARDED on the basis of nominations received from ESPE-member Supervisors/ Heads of Department. The ESPE Research Fellowship Programme comprises the following:

**Full Research Fellowships:** Two years of research training in a centre of excellence, preferably in another country. From 2010, one additional long-term fellowship is available for post-doc students.

**Short-term Research Fellowships:** Two to six months of research training in a centre of excellence.

Since 2009 these Awards (long-term and short-term) have been co-sponsored by ESPE and Novo Nordisk.

Full details can be found at [http://www.europepe.org/awards/awards\\_researchfellowship.html](http://www.europepe.org/awards/awards_researchfellowship.html)

## Nominations now open for the 2013 Geoffrey Harris Prize

The European Society of Endocrinology's prestigious prize for neuroendocrinologists is worth €12 000 and is generously sponsored by Ipsen. The prize will be presented at the annual European Congress of Endocrinology, where the winner will be asked to give one of the main lectures. Nominations can be made by any scientific organisation or administrative group, but self-proposal is not allowed.

Further information can be found at [http://www.euro-endo.org/prizes/about\\_prizes\\_geoffrey.htm](http://www.euro-endo.org/prizes/about_prizes_geoffrey.htm)

**The deadline for nominations is 28 February 2012**

## ESPE Science School 2012

**Call for applications deadline: 10 January 2012**

This is a call for ESPE members to encourage their younger colleagues to apply for places at the ESPE Science School (ESS), which will be on 'Stress Response and Child Health' and will take place on 16–17 May 2012 in Heraklio, Crete, Greece. This also includes attendance at the NICHe conference, taking place at the same venue on 18–20 May 2012.

Applicants for ESS can be postdoctoral fellows, final year PhD students or young research faculty in paediatric endocrinology within five years of their fellowship or PhD. Details of the 2012 ESS and how to apply are available at the link below.

[http://www.europepe.org/education/education\\_scienceschool.html](http://www.europepe.org/education/education_scienceschool.html)

## NICHe conference 2012

**Deadline for registration: 10 January 2012**

The fifth NICHe (New Inroads in Child Health) conference will take place in Heraklio, Crete, Greece from 18–20 May 2012 and will be on 'Stress Response and Child Health'. The series of conferences is based on our conviction that it is the responsibility of those of us involved in today's biomedical research enterprise to translate the remarkable scientific innovations we are witnessing into health gains for children.

The Scientific Committee is pleased to invite those interested to register with the Conference Organizer, Mr Kostas Kavadias (email: [kkavadias@era.gr](mailto:kkavadias@era.gr)). Twenty-five slots are available for ESPE members on a first-come, first-served basis. Please visit the ESPE website to view the programme and invitation.

## 6th Advanced Seminar in Developmental Endocrinology

DEAR FRIENDS AND COLLEAGUES, I am personally inviting you (fellows in training) to apply to participate in the 6th Advanced Seminar in Developmental Endocrinology. This seminar will take place from 10–12 May 2012 in Bern, Switzerland, with the theme of ‘developmental biology of GH secretion, growth and treatment’. To view the programme and all the important details of the seminar check the website: [http://www.eurospe.org/education/education\\_DevEndoSeminar.html](http://www.eurospe.org/education/education_DevEndoSeminar.html). The main intention is to attract young physicians as well as researchers to science in the field of paediatric endocrinology, especially developmental endocrinology.

The course is free of charge (the home institution need only cover the travel expenses) and the number of students is limited. Therefore,

I look forward to receiving your applications in due time. Applications are invited by 31 January 2012 and full details of how to apply can be found online.

Best regards,

**Professor Primus E Mullis**

Paediatric Endocrinology, Diabetology & Metabolism

University Children’s Hospital

Inselspital

CH-3010 Bern, Switzerland

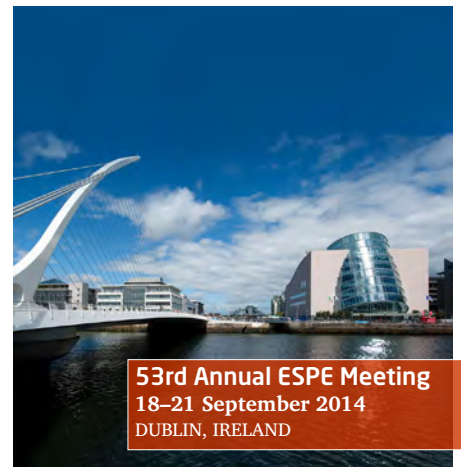
Tel: + 41 31 632 9552

Fax: + 41 31 632 9550

Email: [primus.mullis@insel.ch](mailto:primus.mullis@insel.ch)



**51st Annual ESPE Meeting**  
20–23 September 2012  
LEIPZIG, GERMANY



**53rd Annual ESPE Meeting**  
18–21 September 2014  
DUBLIN, IRELAND



**9th Joint Meeting on Paediatric Endocrinology**  
19–22 September 2013 MILAN, ITALY



**54th Annual ESPE Meeting**  
9–12 September 2015  
BARCELONA, SPAIN



European Society for Paediatric Endocrinology

*Improving care of children with endocrine diseases by promoting knowledge and research*

**Secretary General:**

Professor Lars Sävendahl, MD, PhD  
Professor of Pediatric Endocrinology  
Senior Consultant and Team Leader  
Division of Pediatric Endocrinology, Q2:08  
Karolinska Institute and University Hospital  
SE-171 76 Stockholm, Sweden  
Tel: + 46 (0)8 5177 2369;  
Fax + 46 (0)8 5177 5128;  
Email: [lars.savendahl@ki.se](mailto:lars.savendahl@ki.se)

ESPE web site: [www.eurospe.org](http://www.eurospe.org)

### ESPE Newsletter

© 2011 The European Society for Paediatric Endocrinology  
*The views expressed by the contributors are not necessarily those of ESPE.*

**Editor:** Professor Feyza Darendeliler  
Istanbul Tip Fakultesi  
Cocuk Sagligi Ve Hastaliklari  
Anab Dali, Capa  
Istanbul, TR-34390, Turkey  
Email: [feyzad@istanbul.edu.tr](mailto:feyzad@istanbul.edu.tr)

**Designed by:** Sublime Creative

**Published by:** BioScientifica Ltd  
Euro House, 22 Apex Court, Woodlands,  
Bradley Stoke, Bristol, BS32 4JT, UK  
[www.bioscientifica.com](http://www.bioscientifica.com)

*BioScientifica is a subsidiary of the Society for Endocrinology*

### ESPE Secretariat

The ESPE Secretariat is managed by BioScientifica Limited, headed by Managing Director Leon Heward-Mills.

Joanne Fox-Evans, BioScientifica's Secretariats Manager, oversees the day-to-day relationship with ESPE, liaising with the ESPE council and committee members as well as being the main point of contact for ESPE enquiries. She undertakes projects requested by the Secretary General, providing him with assistance and attending ESPE council and committee meetings. Kerry Lear handles membership renewals, payments and banking and deals with subscriptions to *Hormone Research in Paediatrics*.

BioScientifica also manages the Corporate Liaison Board which deals with industry sponsors, and is also responsible for publication of the ESPE newsletter.

ESPE Secretariat, BioScientifica Ltd, Euro House, 22 Apex Court, Woodlands, Bradley Stoke, Bristol, BS32 4JT, UK  
Tel: + 44 (0) 1454 642 246 Fax: + 44 (0) 1454 642 222  
Email: [espe@eurospe.org](mailto:espe@eurospe.org)